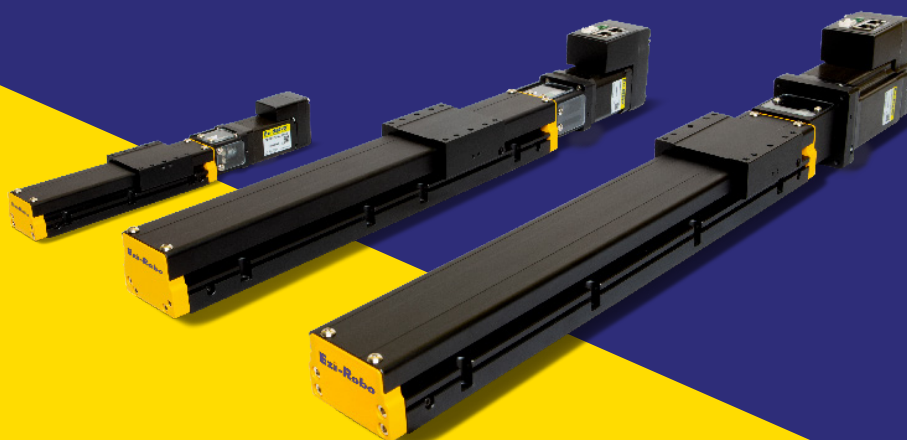


Actuator series Driven by Ezi-SERVO

- Aluminum Mono Stage with Integrated Drive
- LM Guide units on both side faces (Compact)
- Integrated Drive (Motor + Encoder + Drive + Motion Controller)
- Various Field Networks Supported such as EtherCAT, Ethernet
- High Resolution Encoder (Max. 20,000ppr)
- Size Line-up (AMS30 : 37x29mm, AMS40 : 42x38mm, AMS50 : 52x45mm, AMS60 : 60x45mm)



■ AMS30/40 Series

Name		Unit	AMS30-02R□		AMS40-02R□ AMS40-05R□				
Diameter / Lead		mm	Ø8/02		Ø8/02			Ø8/05	
Stroke (□)		mm	50	100	50	100	150	200	250
Ball Screw Type		—	Rolled		Rolled				
Repeatability		mm	±0.005		±0.005				
Transportable Mass	Horizontal	kg	3		3				
	Vertical		1.5		2				
Maximum Speed		mm/s	20		100			200	
Motor			Ezi-SERVO-ALL-28L-D		Ezi-SERVOII-PE-ALL-42XL-A				
					Ezi-SERVOII-EC-ALL-42XL-A				

■ AMS50/60 Series

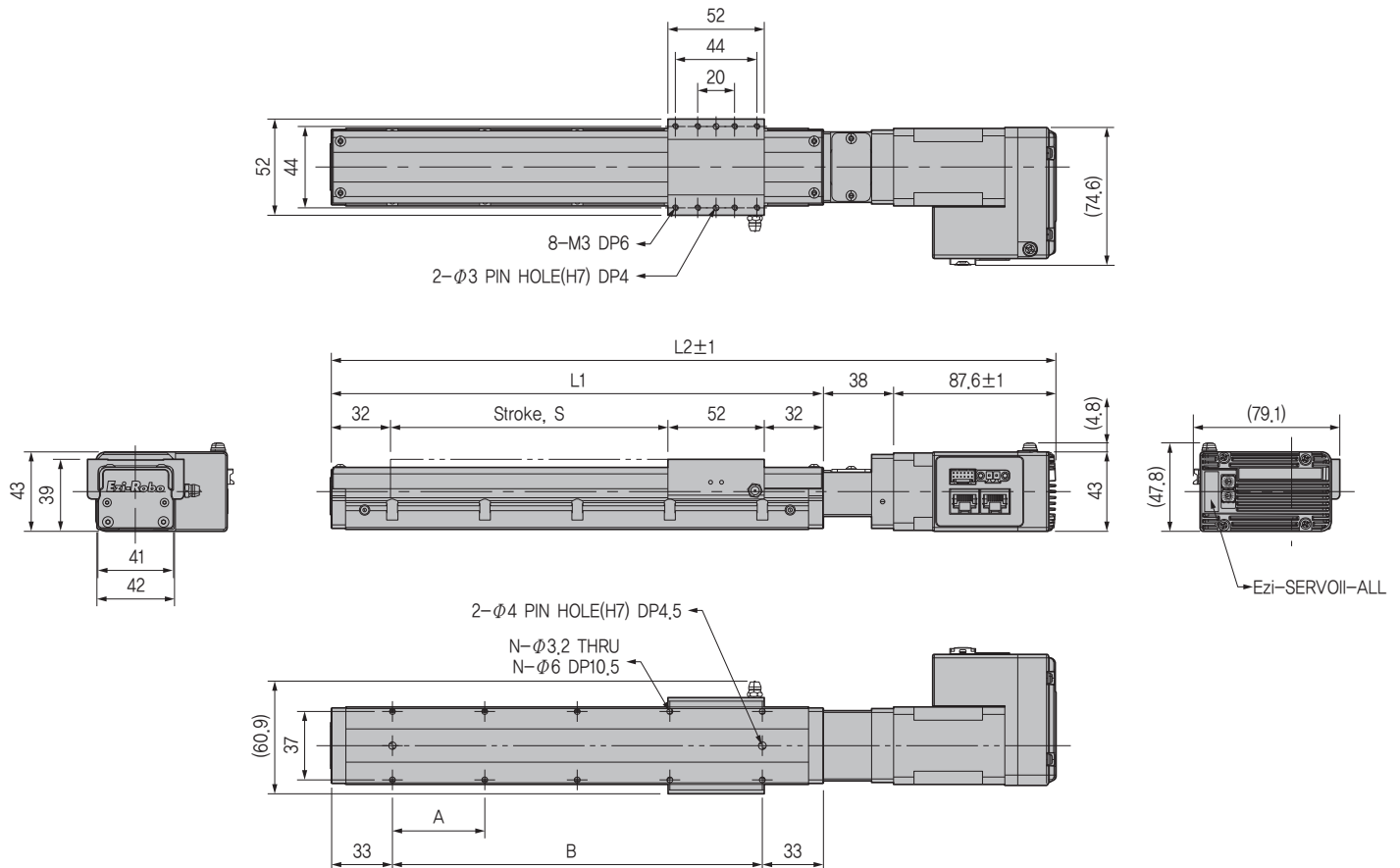
Name		Unit	AMS50-05R□ AMS50-10R□				AMS60-05R□ AMS60-10R□								
Diameter / Lead		mm	Ø12/05		Ø12/10		Ø12/05					Ø12/10			
Stroke (□)		mm	50	100	150	200	50	100	150	200	250	300	400	500	600
Ball Screw Type		—	Rolled				Rolled								
Repeatability		mm	±0,005				±0,005								
Transportable Mass	Horizontal	kg	8				12								
	Vertical		4				6								
Maximum Speed		mm/s	250		500		250					500			
Motor			Ezi-SERVOII-PE-ALL-42XL-A				Ezi-SERVOII-PE-ALL-60L-A								
			Ezi-SERVOII-EC-ALL-42XL-A				Ezi-SERVOII-EC-ALL-60L-A								

■ Dimension (AMS40)

Unit (mm)

Model Name	Motor Direction			
	Left	Right	Down	Up
RB-AML40-02R□	L	R	D	U
RB-AML40-05R□	L	R	D	U

Stroke	L1	L2	A	B	N
50	166	291,6	50	100	6
100	216	341,6	50	150	8
150	266	391,6	50	200	10
200	316	441,6	50	250	12
250	366	491,6	50	300	14



■ Motor Direction (AMS40)

Left	Down	Right	Up



Fast, Accurate, Smooth Motion

* Product information in this catalog based on date of Sep 2022.
The specification of product can be changed without pre-notification due to enhancements and improvements of product.

FASTECH Co., Ltd.

Rm#1202, 401-dong, Bucheon Techno-Park,
655, Pyeongcheon-ro, Bucheon-si Gyeonggi-do,
Republic of Korea (Postal Code: 14502)
Homepage : www.fastech-motions.com

TEL : +82-32-234-6317
FAX : +82-32-234-6302
E-mail : sales@fastech-motions.com